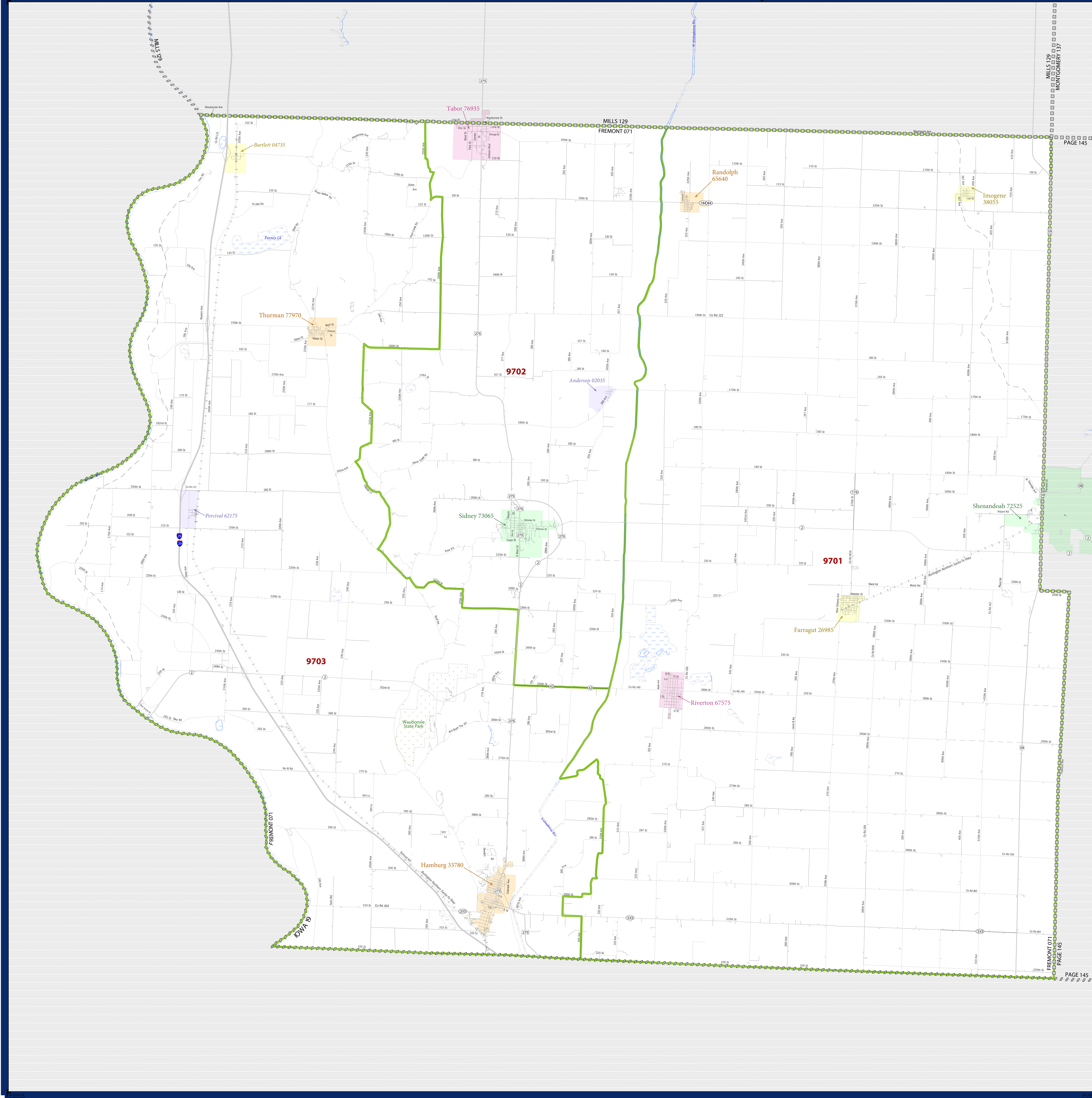


# 2010 CENSUS - CENSUS TRACT REFERENCE MAP: Fremont County, IA



SYMBOL DESCRIPTION		LEGEND	
Federal American Indian Reservation	[Symbol]	L'ANSE RES 1880	[Symbol]
Off Reservation Trust Land, Hawaiian Home Land	[Symbol]	T1880	[Symbol]
Oklahoma Tribal Statistical Area, Alaska Native Village Statistical Area, Tribal Designated Statistical Area	[Symbol]	KAW OTSA 5340	[Symbol]
State American Indian Reservation	[Symbol]	Tama Res 4125	[Symbol]
State Designated Tribal Statistical Area	[Symbol]	Lumbee STSA 9815	[Symbol]
Alaska Native Regional Corporation	[Symbol]	NANA ANRC 52120	[Symbol]
State (or statistically equivalent entity)	[Symbol]	NEW YORK 36	[Symbol]
County (or statistically equivalent entity)	[Symbol]	ERIE 029	[Symbol]
Minor Civil Division (MCD) <sup>1,2</sup>	[Symbol]	Bristol town 07485	[Symbol]
Consolidated City	[Symbol]	MILFORD 47500	[Symbol]
Incorporated Place <sup>1,3</sup>	[Symbol]	Davis 18100	[Symbol]
Census Designated Place (CDP) <sup>3</sup>	[Symbol]	Incline Village 35100	[Symbol]
Census Tract	[Symbol]	<b>33.07</b>	[Symbol]

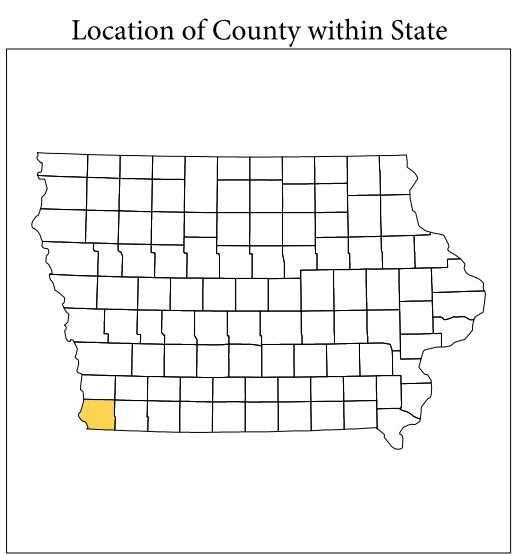
DESCRIPTION	SYMBOL	DESCRIPTION	SYMBOL
Interstate	[Symbol]	Water Body	[Symbol]
U.S. Highway	[Symbol]	Swamp or Marsh	[Symbol]
State Highway	[Symbol]	Glacier	[Symbol]
Other Road	[Symbol]	Military	[Symbol]
4WD Trail, Stamen, Alley, Walkway, or Ferry	[Symbol]	National or State Park, Forest, or Recreation Area	[Symbol]
Railroad	[Symbol]	Inset Area	[Symbol]
Pipeline or Power Line	[Symbol]	Outside Subject Area	[Symbol]
Ridge or Fence	[Symbol]		
Property Line	[Symbol]		
Nonvisible Boundary or Feature Not Elsewhere Classified	[Symbol]		

Where state, county, and/or MCD boundaries coincide, the map shows the boundary symbol for only the highest-ranking of these boundaries.

1 A " " following an MCD name denotes a false MCD. A " " following a place name indicates that a false MCD exists with the same name and FIPS code as the place; the false MCD label is not shown.

2 MCD boundaries are shown in the following states in which MCDs have functioning governments: Connecticut, Maine, Massachusetts, Michigan, Minnesota, New Hampshire, New Jersey, New York, Pennsylvania, Rhode Island, Vermont, and Wisconsin.

3 Place label color correlates to the place fill color.

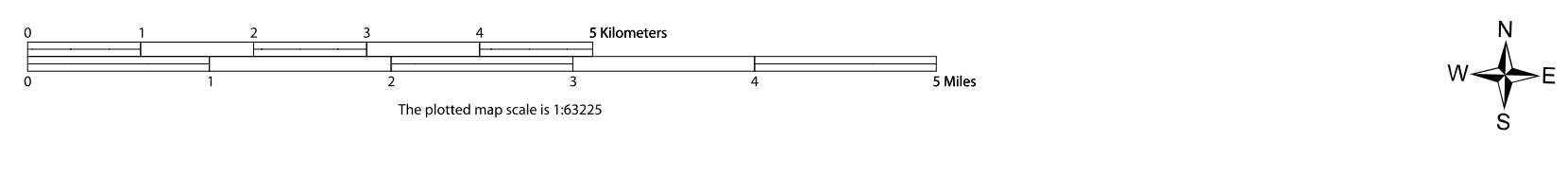


All legal boundaries and names are as of January 1, 2010. The boundaries shown on this map are for Census Bureau statistical data collection and tabulation purposes only; their depiction and designation for statistical purposes does not constitute a determination of jurisdictional authority or rights of ownership or entitlement.

Geographic: Vintage: 2010 Census (reference date: January 1, 2010)  
 Data Source: U.S. Census Bureau's MAINTIGR database (TAB100119)  
 Map Created by Geography Division: November 28, 2010

U.S. DEPARTMENT OF COMMERCE Economics and Statistics Administration U.S. Census Bureau

Projection: Albers Equal Area Conic  
 Datum: NAD 83  
 Spheroid: GRS 80  
 1st Standard Parallel: 40 53 46  
 2nd Standard Parallel: 42 58 46  
 Central Meridian: 93 23 22  
 Latitude of Projection's Origin: 40 22 31  
 False Easting: 0  
 False Northing: 0



PARENT SHEET 1  
 Total Sheets: 1  
 Index Sheets: 0  
 Parent Sheets: 1  
 Inset Sheets: 0

NAME: Fremont County (071)  
 ENTITY TYPE: County or statistically equivalent entity  
 ST: Iowa (19)